

# DATASHEET

# LD Portal

## Version 3

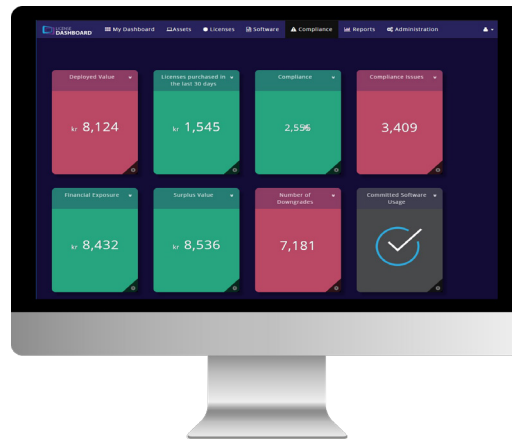
LD Portal enables organizations to reduce their software spend, manage IT projects and monitor application usage across their entire estate in an intuitive business intelligence portal.

LD Portal transforms the wealth of IT data from your License Manager SAM tool into meaningful insights, trend analysis and visual reports, enabling users across the business to understand their IT estate and identify cost saving opportunities.

### Using Your SAM Data to Make Real Changes and Track IT Projects

LD Portal provides simple navigation, starting from customized tiles through to flexible dashboards and down to detailed report information. Dashboards include product categorization, contracts and entitlement, software surplus, compliance and risk, all displaying the information needed to make informed decisions.

Users are able to track and monitor change to their IT estate over time which provides insight and guidance on projects such as Windows 10 adoption or the migration from physical to virtual servers. Users of LD Portal are also able to monitor which applications are being used, by who, and to view whether multiple different applications are being used for the same task, enabling them to cut costs and streamline IT. Users are also available to view the latest detail of their Azure billing data and to track and manage software renewal and maintenance dates.



### Features & Benefits

Customizable role-specific views for each job role; CEO, Finance, IT Manager etc.

Self Service portal to create fully customized sheets and charts.

Create additional tiles at the click of a button.

Access Azure billing data.

Understand your software spend on categories of products.

Identify applications not used in the past 30, 60 and 90 days.

Identify compliance risk by vendor on a month by month basis.

Visualize Office 365 user and subscription data.

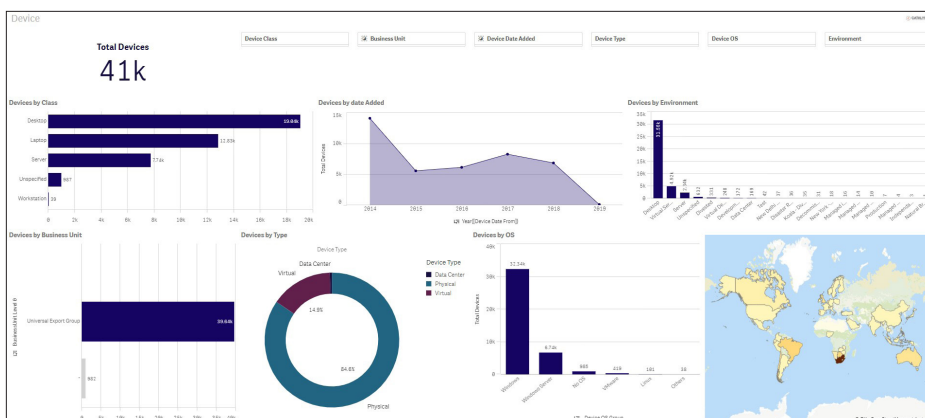
Track IT projects such as Operating System migration. Identify areas of your IT estate to focus on.

Identify problem areas caused by inadvertent deployments or procurement oversight.

Understand which teams or users have unused software and why.

Benchmark your SAM position and track your performance.

Web based portal available across any device.

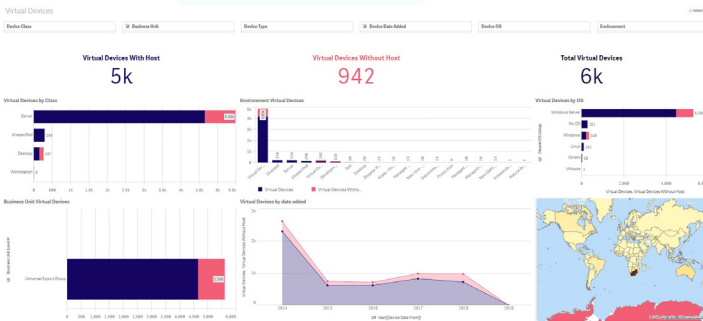


## Azure Billing Dashboard

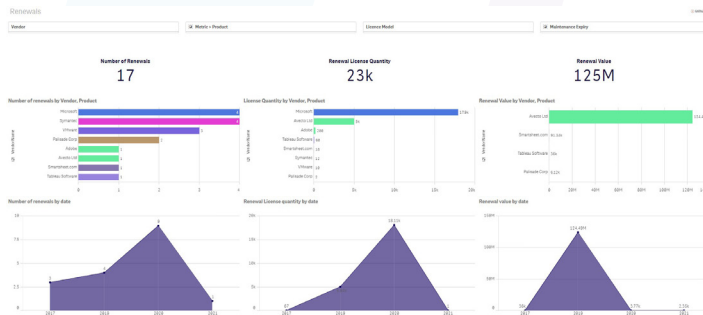
LD Portal's Azure Billing App is designed to keep you fully up to date with all Azure usage and billing, including alerts for any service overage. These reports within LDP offer full visibility of your compliance and usage for your entire estate within a single centralized view; all enabled by our platform's ability to consolidate discovery data from multiple sources in one place.

Designed to further enhance the user experience and provide you with full estate visibility anytime from any device. All granular Azure Portal data can be viewed through our own BI charts and graphs, LD Portal can also show the potential shortfall if the consumption continues at the current rate in a years' time as well as critical alerts for Service Overage.

## Virtual Device Dashboard



## Manage Software Renewals



## Contact License Dashboard

[www.licensedashboard.com](http://www.licensedashboard.com)

[info@licensedashboard.com](mailto:info@licensedashboard.com)

+44 (0)1904 562 217 - UK

1-855-773-3404 - USA

1800 502 881 - Aus/NZ

### License Dashboard Head Office

License Dashboard  
Blenheim House  
York Road  
Pocklington  
York  
YO42 1NS  
UK

## Requirements Summary

### IIS Application Server

#### Software

- Windows Server 2012 or later
- Internet Information Server (IIS)
- Microsoft .NET Framework v4.5.2 or later
- Valid SSL Certificate

#### Hardware

##### Minimum recommended values

- Physical or virtual
- Two CPU cores/vCPUs
- 12 GB RAM
- 100 GB HDD

### Qlik Sense Server

#### Software

- Windows Server 2012 or later
- Microsoft .NET Framework v4.5.2 or later
- Valid SSL Certificate

#### Hardware

##### Minimum recommended values

- Physical or virtual
- Two CPU cores/vCPUs
- 16 GB RAM
- 100 GB HDD programs and system
- 100 GB HDD data

NOTE: Qlik Sense has its own web interface that will bind to TCP Port 443, so it is recommended that IIS is not installed on the machine to avoid conflict.

NOTE: Qlik Sense includes an embedded PostgreSQL database.

### SQL Server

#### Software

- Windows Server 2012 or later
- Microsoft SQL Server 2012 or later including Express editions
- SQL Server and Windows Authentication mode enabled
- License Manager v11.1 or later database

#### Hardware

##### Minimum recommended values. (See Microsoft best practice guides)

- Physical or virtual
- Two CPU cores/vCPUs
- 16 GB RAM
- Fast storage (high IOPS and bandwidth with low latency)
- 100 GB HDD programs and system
- 100 GB HDD data

### Client

#### Software

- Supported web browsers
- Latest version of Chrome
- Other recent web browsers may work but have not been tested.

#### Additional Requirements

- License Manager installation.
- Domain based service account with local admin rights on the Qlik Sense Server and the IIS Application Server, SQL DBO permissions to the LDP configuration database.
- SQL account with DBO permissions to the License Manager and LDP databases.
- Valid SSL certificates for the LDP IIS web portal address and the Qlik Sense server host name address. If LDP is to be published to the Internet, these should be the public names. It is recommended that a wildcard certificate is used.
- Working name resolution between the servers and workstations and to the LDP IIS web portal address and the Qlik Sense server host address.
- SendGrid account <https://sendgrid.com/> to send emails for new users and password resents.