

# DATASHEET

# License Manager

## Version 12



Notifications Dashboard

Manage your software licenses like never before with License Manager 12 - the next generation in Software Asset Management technology. License Manager 12 is the most complete SAM tool available, allowing organizations of all sizes to optimize and control their data center, cloud and desktop software estate.

As more and more organizations understand the importance of SAM, so too are they seeing the immense amount of work, knowledge and process involved in this bespoke discipline. License Dashboard is pleased to offer the closest technology to automated licensing perfection: License Manager.

### Manage Software Licenses Automatically

License Manager automatically scours entitlement sources (such as the MLS) ensuring all items are checked against manufacturers' software catalogues and that special licensing terms, such as upgrades and maintenance, are associated with the necessary base licenses. Likewise, any additional or improved installation granted by grandfathering rights or tech guarantees.

License Manager needs just a few minutes to achieve what would take consultants and previous-generation license management solutions weeks, if not months. 15 years of built-up software dictionaries have enabled License Manager to hold all historic software records.

### Features

- Import and validate license entitlements and MLS automatically
- Connect to any existing inventory source - SCCM, vCenter, ILMT etc
- Manage software estate at a business unit level
- Manage and optimize your cloud and SaaS software spend
- Dedicated IBM and Oracle optimization modules
- Automatic consolidation of user subscriptions (Office 365 etc) to users
- Automatically link primary users to their devices for subscription based software licensing

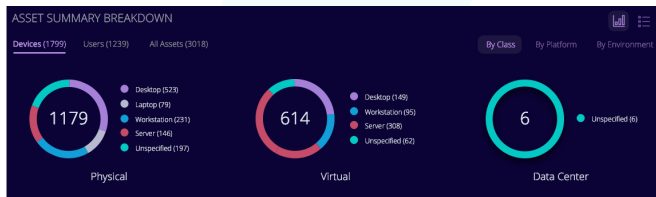
### Benefits

- Reduce risk of software compliance failures
- Minimize over-spend on unnecessary licenses
- Improve IT budgeting and planning
- Prevent over-deployment of software
- Optimize license agreement negotiations
- Build solid foundation for effective SAM

# Next Generation License Management

## Save Up To 30% On Physical, Virtual and Cloud Software

License Manager 12 enables organizations to manage every aspect of their software estate. A new user interface with choice of light and dark theme has been designed in conjunction with our customers and partners to ensure ease of use, enabling organizations to save on their software spend with more insight than ever before.

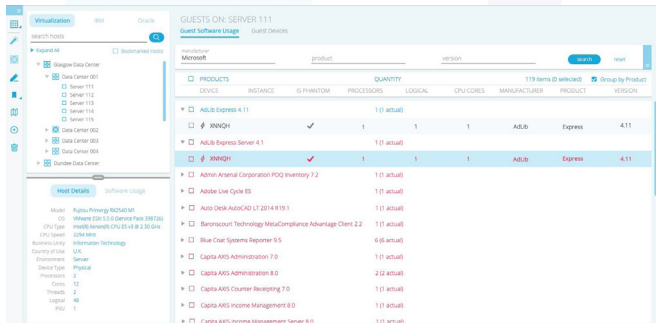


Assets Summary - Devices Information

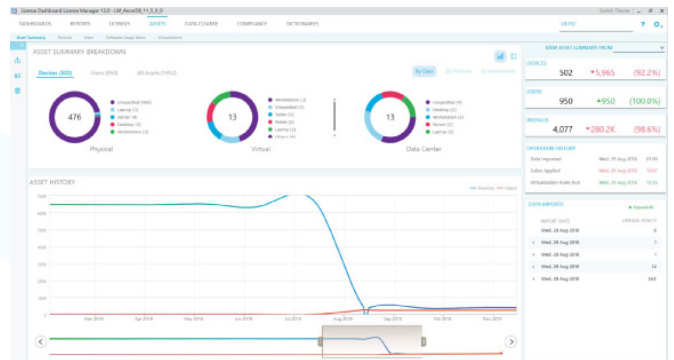
## Data Center Optimization

License Manager enables users to match discovered products on virtual devices to their physical host device where those installations should be managed by the host. It also allows for the management of mobility across hosts and associated accelerated liability.

You can also Manage IBM Capacity licensing and Oracle Database installations with captured data from IBM License Metric Tool or Oracle LMS Scripts respectively.



Data Center Optimization Workspace



Assets Summary

## System Requirements

License Manager 12 is a client/server application, consisting of a Windows Client, that utilises Microsoft.NET Framework v4.6.1 or later, and a database hosted on Microsoft SQL Server 2012 or later.

Optional components include the License Dashboard Portal web reporting interface, and the LM API RESTful web services interface. These require IIS 7.5 or later along with .NET Framework v4.5.2 or later.

License Dashboard Portal also utilises Qlik Sense where the latest requirements are located here:

<http://www.qlik.com/us/products/qlik-sense/system-requirements>

## Server Requirements

### Software

- Microsoft SQL Server or Express 2012 or later
- x86 or x64 supported

### Hardware

- Physical or virtual server
- A specification suitable for running SQL Server 2012 or later (See Microsoft best practice guides)
- Database size depends on the number of devices

## Client Requirements

### Software

- Microsoft .NET Framework v4.6.1 or later
- Any of the following operating systems
  - Windows 7 or later

### Hardware

- Physical or virtual
- A specification suitable for running the operating system and general applications
- Up to 20 MB of disk space for the client application

## Contact License Dashboard

[www.licensedashboard.com](http://www.licensedashboard.com)

[info@licensedashboard.com](mailto:info@licensedashboard.com)

+44 (0)1904 562 217 - UK

1-855-773-3404 - USA

1800 502 881 - Aus/NZ

### License Dashboard Head Office

License Dashboard  
Blenheim House  
York Road  
Pocklington  
York  
YO42 1NS  
UK